



PROTECTING

AOTEAROA'S WILDLIFE

A STORY OF KAITIAKITANGA





CONTENTS

Our Story Introduction	1
Our Vision, Mission & Values	2
Driving Outcomes	3
Our Visionary Roadmap	4
Join Our Story	5



HAERE MAI, LET US INTRODUCE OURSELVES

THE STORY OF WHO WE ARE AND WHERE WE'RE HEADING

We believe in making a difference.

That's why for us, our role as kaitiaki has been intrinsic to our background, and continues to be part of the everyday fabric of our organisation.

Since our inception, we have been steadfast in our ethos of patient care to protect Aotearoa's wildlife through the very best hospital care available. Seeing the region's endangered species sent to the North Island for treatment, a trip that sometimes meant the animals did not survive to receive the care they needed, inspired us to action.

Our founder, Dr. Lisa Argilla, recognised that having a hospital-level facility in the far South would improve outcomes for native wildlife by ensuring they received faster, expert-level intervention without the stress and time constraints of travel. With the help of the Otago Polytechnic, which had a veterinary hospital facility available, we tested the idea in early 2016 with an 8-week pop-up penguin hospital to treat sick and injured hoiho. Armed with the statistics needed to showcase the outcomes our local services could provide, we received funding to develop our business case and support to run another pop-up hospital in 2017. Together with the continued support from the Otago Polytechnic to use their facility

and align with their vet nursing programme, we set up The Wildlife Hospital Trust as a registered charity. The Hospital officially launched on 15 January 2018, admitting our first patients within two hours of opening. We quickly outstripped patient projections and have continued to grow our services, our veterinary and support team, and develop our capability and resources ever since.

We are guided by our vision to see thriving native wildlife in Aotearoa. Our Hospital cares for some of the country's most unique and endangered species, as well as those in abundance across our region. Whether it's our native endangered hoiho, kākāpō, kiwi, kea, kakī, or more commonly seen gulls, kererū or fur seals – we are on hand to provide the care the South Island's wildlife require in their greatest time of need. Our team of experts treat sick and injured animals and return them back into their natural environment. We are also able to provide the compassionate care required when difficult decisions need to be made, protecting animals' dignity and reducing their suffering.

The success of our Hospital has seen increasingly high survival rates, and the return of native species to our shared environment – a place we are all lucky to call home.

But, we know there is always more to do. To ensure the continued

protection of wildlife, and to grow our services to become one of the world's great wildlife hospitals, we have a clear pathway for where we're going, and our team members each know how they contribute to make it happen. We never stand still because, on our doorstep, we know there's an animal that needs us. So, we're committed to doing the mahi to enable a better future for our region's wildlife.

We know to provide the care the animals require; now, we need you. Everyone plays a part in kaitiakitanga, and that's why having a dedicated team of experts, with the very best facilities to provide wildlife with their best chance of survival, doesn't happen without the support of our partners, our volunteers and our community donors. We are committed to making a difference, and we know that it requires collaboration, partnership and commitment from us all to see thriving wildlife in Aotearoa. We are grounded in the philosophy of whiria te tāngata (to weave the people together), because we know the extraordinary is possible when we draw on our collective strengths.

Our story is just getting started.
We'd love you to become part of it...



Ongoing protection of NZ's wildlife is possible with your help. Want to be part of our story?
Get in touch at www.wildlifehospitaldunedin.org.nz/donate or by emailing us at info@wildlifehospitaldunedin.org.nz

GUIDED GUARDIANSHIP

OUR VISION

Thriving
Wildlife in
Aotearoa

OUR MISSION

To improve the wellbeing
of NZ's native wildlife
through expert
veterinary care, and
education

OUR VISION, MISSION AND VALUES

Here at the Dunedin Wildlife Hospital, we are guided by our vision, our mission, and by our supporting values. They are the cornerstone of our organisation, setting the mandate for how we do things through a shared understanding of what it is that makes us special, and those things that guide us in our work. Let us tell you more...

COMPASSION



Patient welfare is
our beating heart

We put our patients first, advocating for their welfare, and making the tough calls when it's needed. For us, compassion is instinctive; it's in our DNA.

COLLABORATION



Together, we can
make a difference

We believe unity builds unstoppable momentum. Together with our people, our partners and our community we leverage our diversity to deliver a better future for wildlife in Aotearoa.

INNOVATION



We re-imagine
what's possible

We encourage curiosity because we believe in raising the bar. We think big, embrace change, and seek to break new ground for our patients and our partners.

INTEGRITY



We stand by
what's right

We are unyielding in establishing trust by saying and doing what we mean. We are always genuine and respectful and take responsibility to champion for the wellbeing of our patients and our environment.



Ongoing protection of NZ's wildlife is possible with your help. Want to be part of our story?
Get in touch at www.wildlifehospitaldunedin.org.nz/donate or by emailing us at info@wildlifehospitaldunedin.org.nz

MAKING A DIFFERENCE

OUR ACHIEVEMENTS

- Nearly 80% success rate across all species
- First-ever captive hatching of hoiho chicks for wild release
- Caring for more than half of the mainland's hoiho chicks each breeding season
- Development of NZ's first wildlife qualification for vet nurses, a postgraduate certificate
- Development of a hoiho hand-rearing manual, a major contribution to management of the species
- Innovation in action, including 3D-printing a kiwi beak splint, and pioneering a tendon surgery in penguins

OUR OPPORTUNITIES

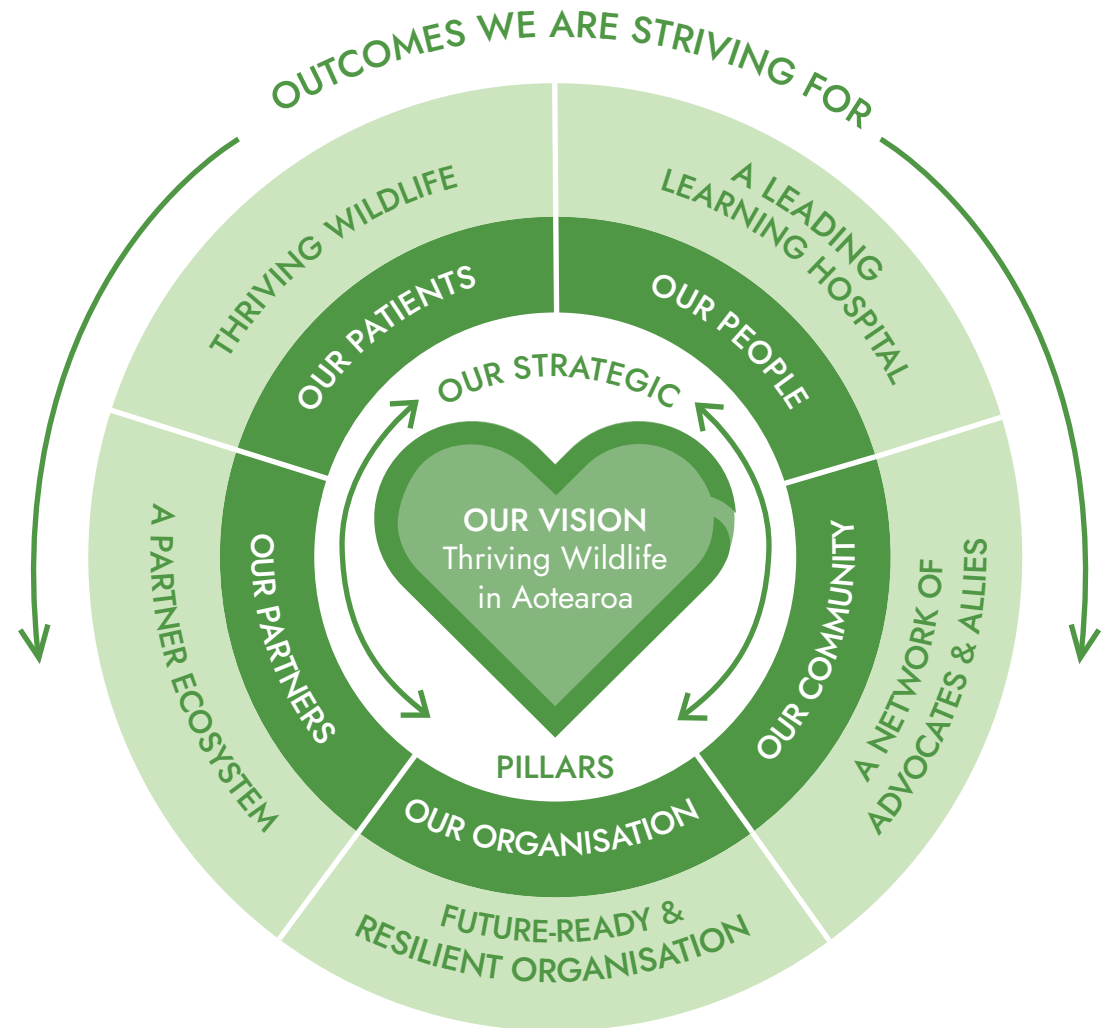
- A state-of-the-art Hospital facility with education and visitor capacity
- Helping to further develop the Otago Polytechnic veterinary nursing programme
- Further contributions to research that impacts threatened species
- Growing our community education programmes to include schools, retirees, corporates and clubs
- Growing our partnerships, including greater collaboration with mana whenua

OUR CHALLENGES

- Securing sustainable, diversified and long-term funding for our operations
- Finding meaningful ways for the public and volunteers to stay involved
- Long-term viability of our Hospital facility as we continue to grow

OUR VISION-DRIVING OUTCOMES

Our vision guides our focus and ensures we are aligning our actions with the outcomes we want to achieve – because, put simply, we believe wholeheartedly in what we're aiming for.



Ongoing protection of NZ's wildlife is possible with your help. Want to be part of our story?
Get in touch at www.wildlifehospitaldunedin.org.nz/donate or by emailing us at info@wildlifehospitaldunedin.org.nz

THE FUTURE PATHWAY

OUR STRATEGIC PILLARS & OBJECTIVES

OUR VISIONARY ROADMAP

For us, coming to work each day provides an innate sense of purpose. We are all motivated by our shared visionary roadmap, the outcomes it drives, and we all know the steps needed to get there. Our story is just getting started, there's great things to come, and we'd love you to be part of it.

HORIZON 1

What we will do to build our service and capability

HORIZON 2

What we will do to extend and grow our service and capability

HORIZON 3

What we will do to demonstrate leadership



WE WILL ADVOCATE FOR THE WELLBEING OF NZ WILDLIFE AND CONTRIBUTE TO ONGOING CONSERVATION AND PROTECTION EFFORTS AS A RESPECTED VOICE IN THE FIELD.

Continue our compassionate patient care practice, and extend our rehabilitation network

Contribute to research, and advocate for policy changes where needed

Influence national conservation and protection efforts

WE HAVE THRIVING WILDLIFE



WE WILL CONTINUALLY GROW OUR CAPABILITY AND SHARE OUR EXPERTISE TO ATTRACT AND RETAIN HIGH PERFORMING PEOPLE.

Attract and retain leading veterinary practitioners and support staff through employee development opportunities

Create opportunities for on-the-job career and fieldwork experiences, and provide internships to inspire interest and build our capability

Become a recognised international Wildlife Hospital

WE'RE A LEADING LEARNING HOSPITAL



WE WILL EDUCATE AND INSPIRE OUR COMMUNITY THROUGH SHARING OUR KNOWLEDGE ON WILDLIFE HEALTH AND WELLBEING.

Promote our services through community and partner channels to build awareness and create advocates

Educate tomorrow's generations through school programmes to inspire and future-proof ongoing wildlife protection efforts

Build community loyalty and participation through regular and ongoing engagement activities

WE HAVE A NETWORK OF ADVOCATES AND ALLIES



WE WILL PROTECT, GROW AND ENHANCE OUR PARTNERSHIPS TO ACHIEVE SHARED GOALS.

Develop enduring partnerships to achieve shared goals and ensure ongoing wildlife protection can continue

Collaborate with our partners to grow our services, build our capability and to generate stronger community loyalty

Create stewards in our community through a strong network of partners

WE HAVE A STRONG PARTNER ECOSYSTEM



WE WILL MATURE OUR BUSINESS PROCESSES AND POLICIES TO ENSURE OUR FUTURE SUSTAINABILITY AND ONGOING STRATEGIC CLARITY.

Enable our organisation's future through robust policies and processes

Advocate for diversity across our organisation and Board to ensure broad perspectives and input is fostered

Ensure there is clear and aligned strategic intent across our organisation, which is supported and understood by our partners

WE'RE FUTURE READY AND RESILIENT

OUTCOMES WE ARE DRIVING



Ongoing protection of NZ's wildlife is possible with your help. Want to be part of our story? Get in touch at www.wildlifehospitaldunedin.org.nz/donate or by emailing us at info@wildlifehospitaldunedin.org.nz



**JOIN OUR
STORY**

THE WILDLIFE HOSPITAL NEEDS YOU!

We would love you to become part of our story, so that together we can continue our efforts to protect Aotearoa's wildlife, grow our services, and educate our community.

If you would like to get involved, or would like to know more about what we do, get in touch with us today.

 www.wildlifehospitaldunedin.org.nz/donate

 info@wildlifehospitaldunedin.org.nz

 @dunedinwildlifehospital

 @dunedinwildlifehospital

If you find a sick or injured native animal
Immediately call the Department of Conservation (DOC) on 0800 DOC HOT.





www.wildlifehospitaldunedin.org.nz

